

powered by

Q.ANTUM DUO Z

Q.PEAK DUO XL-G10.3 / BFG 475-490

BIFACIAL DOUBLE GLASS MODULE
WITH EXCELLENT RELIABILITY
AND ADDITIONAL YIELD



Quality
Controlled PV

www.tuv.com
ID 1111232615



BIFACIAL ENERGY YIELD GAIN OF UP TO 20 %

Bifacial Q.ANTUM solar cells with zero gap cell layout make efficient use of light shining on the module rear-side for radically improved LCOE.



LOW ELECTRICITY GENERATION COSTS

Q.ANTUM DUO Z combines cutting edge cell separation and innovative wiring with Q.ANTUM Technology for higher yield per surface area, lower BOS costs, higher power classes, and an efficiency rate of up to 21.4 %.



INNOVATIVE ALL-WEATHER TECHNOLOGY

Optimal yields, whatever the weather with excellent low-light and temperature behavior.



ENDURING HIGH PERFORMANCE

Long-term yield security with Anti LID and Anti PID Technology¹, Hot-Spot Protect and Traceable Quality Tra.Q™.



FRAME FOR VERSATILE MOUNTING OPTIONS

High-tech aluminum alloy frame protects from damage, enables use of a wide range of mounting structures and is certified regarding IEC for high snow (5400 Pa) and wind loads (2400 Pa).



A RELIABLE INVESTMENT

Double glass module design enables extended lifetime with 12-year product warranty and improved 30-year performance warranty².



6 BUSBAR
CELL TECHNOLOGY



12 BUSBAR
CELL TECHNOLOGY

¹ APT test conditions according to IEC / TS 62804-1:2015 method B (-1500 V, 168h) including post treatment according to IEC 61215-1-1 Ed. 2.0 (CD)

² See data sheet on rear for further information.

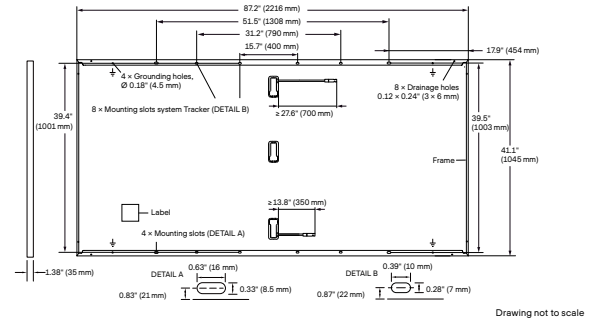
THE IDEAL SOLUTION FOR:



Ground-mounted
solar power plants

MECHANICAL SPECIFICATION

Format	87.2in × 41.1in × 1.38in (including frame) (2216mm × 1045mm × 35mm)
Weight	64.2lbs (29.1kg)
Front Cover	0.08in (2.0mm) thermally pre-stressed glass with anti-reflection technology
Back Cover	0.08in (2.0mm) semi-tempered glass
Frame	Anodized aluminum
Cell	6 × 26 monocrystalline Q.ANTUM solar half cells
Junction Box	2.09-3.98in × 1.26-2.36in × 0.59-0.71in (53-101mm × 32-60mm × 15-18mm), IP67, with bypass diodes
Cable	4mm ² Solar cable; (+) ≥27.6in (700mm), (-) ≥13.8in (350mm)
Connector	Stäubli MC4, Stäubli MC4-Evo2, Hanwha Q CELLS HQC4, IP68



ELECTRICAL CHARACTERISTICS

POWER CLASS		475		480		485		490		
MINIMUM PERFORMANCE AT STANDARD TEST CONDITIONS, STC ¹ AND BSTC ¹ (POWER TOLERANCE +5 W / -0 W)										
Minimum	Power at MPP ¹	P _{MPP} [W]	475	519.6	480	525.0	485	530.5	490	536.0
	Short Circuit Current ¹	I _{SC} [A]	11.08	12.12	11.12	12.17	11.16	12.21	11.20	12.26
	Open Circuit Voltage ¹	V _{OC} [V]	53.15	53.34	53.39	53.58	53.63	53.82	53.86	54.06
	Current at MPP	I _{MPP} [A]	10.55	11.54	10.59	11.58	10.63	11.63	10.67	11.67
	Voltage at MPP	V _{MPP} [V]	45.03	45.02	45.33	45.32	45.63	45.62	45.93	45.92
	Efficiency ¹	η [%]	≥20.5	≥22.4	≥20.7	≥22.7	≥20.9	≥22.9	≥21.2	≥23.1

Bifaciality of P_{MPP} and I_{SC} 70% ±5% • Bifaciality given for rear side irradiation on top of STC (front side) • According to IEC 60904-1-2

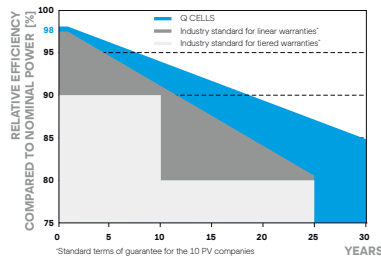
¹ Measurement tolerances P_{MPP} ±3%; I_{SC}, V_{OC} ±5% at STC: 1000 W/m²; *at BSTC: 1000 W/m² + φ × 135 W/m², φ = 70% ±5%, 25 ±2 °C, AM 1.5 according to IEC 60904-3

MINIMUM PERFORMANCE AT NORMAL OPERATING CONDITIONS, NMOT²

Minimum	Power at MPP	P _{MPP} [W]	357.6	361.4	365.1	368.9
	Short Circuit Current	I _{SC} [A]	8.92	8.96	8.99	9.02
	Open Circuit Voltage	V _{OC} [V]	50.27	50.49	50.72	50.95
	Current at MPP	I _{MPP} [A]	8.30	8.34	8.37	8.40
	Voltage at MPP	V _{MPP} [V]	43.06	43.35	43.63	43.92

² 800 W/m², NMOT, spectrum AM 1.5

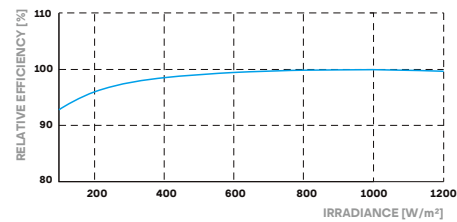
Q CELLS PERFORMANCE WARRANTY



At least 98% of nominal power during first year. Thereafter max. 0.45% degradation per year. At least 93.95% of nominal power up to 10 years. At least 84.95% of nominal power up to 30 years.

All data within measurement tolerances. Full warranties in accordance with the warranty terms of the Q CELLS sales organisation of your respective country.

PERFORMANCE AT LOW IRRADIANCE



Typical module performance under low irradiance conditions in comparison to STC conditions (25 °C, 1000 W/m²)

TEMPERATURE COEFFICIENTS

Temperature Coefficient of I _{SC}	α [%/K]	+0.04	Temperature Coefficient of V _{OC}	β [%/K]	-0.27
Temperature Coefficient of P _{MPP}	γ [%/K]	-0.34	Nominal Module Operating Temperature	NMOT [°F]	108 ± 5.4 (42 ± 3 °C)

PROPERTIES FOR SYSTEM DESIGN

Maximum System Voltage V _{sys} [V]	1500	PV module classification	Class II
Maximum Series Fuse Rating [A DC]	20	Fire Rating based on ANSI / UL 61730	TYPE 29 ⁴
Max. Design Load, Push / Pull ³ [lbs/ft ²]	75 (3600 Pa) / 33 (1600 Pa)	Permitted Module Temperature on Continuous Duty	-40 °F up to +185 °F (-40 °C up to +85 °C)
Max. Test Load, Push / Pull ³ [lbs/ft ²]	113 (5400 Pa) / 50 (2400 Pa)		

³ See Installation Manual

⁴ New Type is similar to Type 3 but with metallic frame

QUALIFICATIONS AND CERTIFICATES

Quality Controlled PV - TÜV Rheinland, UL 61730, CE-compliant, IEC 61215:2016, IEC 61730:2016, U.S. Patent No. 9,893,215 (solar cells)



PACKAGING INFORMATION

	Horizontal packaging	Vertical packaging	Weight	Volume	Modules
Dimensions (L x W x H)	89.4in / 2270mm	43.1in / 1095mm	47.6in / 1210mm	1975 lbs / 896kg	20 pallets
Dimensions (L x W x H)	90.8in / 2306mm	45.3in / 1150mm	47.4in / 1205mm	2013 lbs / 913kg	20 pallets
Weight	1975 lbs / 896kg	2013 lbs / 913kg	2013 lbs / 913kg	2013 lbs / 913kg	2013 lbs / 913kg
Volume	20 pallets	20 pallets	20 pallets	20 pallets	20 pallets
Modules	20 modules	20 modules	20 modules	20 modules	20 modules

Note: Installation instructions must be followed. See the installation and operating manual or contact our technical service department for further information on approved installation and use of this product.

Hanwha Q CELLS America Inc.

400 Spectrum Center Drive, Suite 1400, Irvine, CA 92618, USA | TEL +1 949 748 59 96 | EMAIL inquiry@us.q-cells.com | WEB www.q-cells.us